

# DRIVEN

## ARE YOU DRIVEN TO FIND THE TREASURE?

This document provides the necessary information to locate the 2003 ATH Treasure which is physically located somewhere in England. This years prize fund is bigger than ever and prizes will be awarded in various categories- Best ATH Virgins, 1st/2nd/3rd to treasure, highest score etc.

If you find the treasure please follow the instructions enclosed. If you feel the treasure is missing from where it should be or everything is not as expected please contact Stephen Lees on the numbers below.

Points will be awarded for all aspects of the Hunt- correct answers, solved puzzles, identified pictures etc. Include as much information in your answers as possible. It is not necessary to actually find the treasure. If you are unable to visit the treasure site due to your location but feel you know where it is, please contact the organiser as soon as possible so your virtual find can be registered.

Check back to <http://public.logicacmg.com/~ath/> during the hunt duration as news and errata will be posted here. This hunt is also available to download from the same place.

# 2003 ARMCHAIR TREASURE HUNT

# 5

To enter, send your answers to [stephen.lees@logicacmg.com](mailto:stephen.lees@logicacmg.com) by the end of 19th January 2004.

To be eligible for prizes teams must have a LogicaCMG employee as Captain, although all are welcome to participate. Involvement by family and friends of employees is encouraged.

## Organiser Contact information

Email- [stephen.lees@logicacmg.com](mailto:stephen.lees@logicacmg.com)  
Mobile- 07941 616 774  
Home- 01634 200952

Good luck and stay Driven  
Stephen

# 12



femfresh

1. What is the registration number of Tony Hancock's car?
2. Which Gosfield dressed as Diane, and was later on the ball?
3. During 2000 4 additional grants were approved for this building. How much for?
4. How much was privilege of passing by the private road?
5. John Gerrard is the treasurer and they started at Stanford Hall- but when?
6. How many vehicles were built in the Alexandria works in 1910?
7. You are not driven by animal power, no less than 60 yards ahead of you is the third of three mandatory persons, how fast are you going?
8. How many does a Bordeaux automatic have?

OBFCABWRDVP AEI

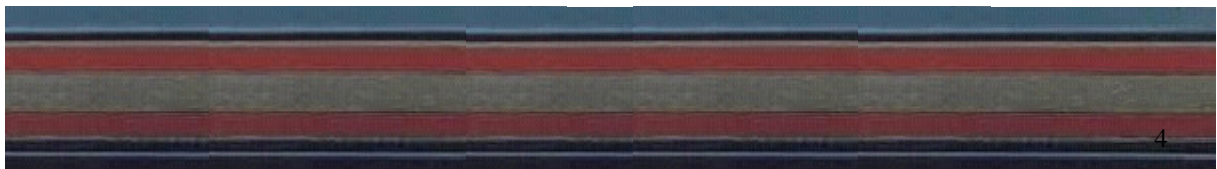
Nº 67

2224/5/6/7 or 2430



10

#20050507





9. What system was adopted in 1924 on Elettra to link the empire?
10. How many times has the Eurovision Song Contest been held in Florence?
11. What is the phone number of the NACRC at 2 less than the Hammers?
12. How many valves does a wankel have?
13. What was the circulation of Picture Post in 1936?
14. What is Cosmo Kramer's phone number?
15. A doomed school yard, a known criminal, a noisy resting place- what year was the author born?
16. Where was golf, played with red balls, invented in the 1890's?
17. Which Northern area was used to create a car whose optimum for travel was 88, yet could only display 85?
18. What is the remotest place in Britain?



72-74







Birthdate: 14th December 1981



12

KW JO IL CVKKSATM IL WL DP WHFSFKOZUD BB JYWB



112026635542951461171181198106114

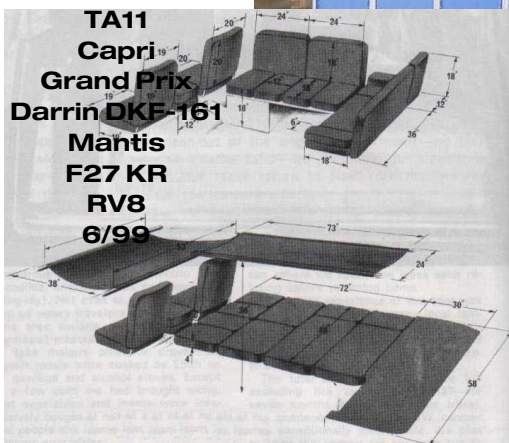


41421151815191255141515141995185820414123151251811920879125820142315451351112019209189161941411855251

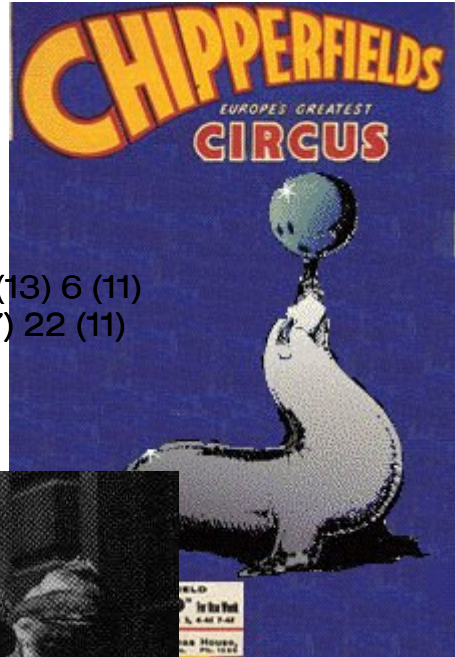


**DRIVEN** under a LIVE! dead body!

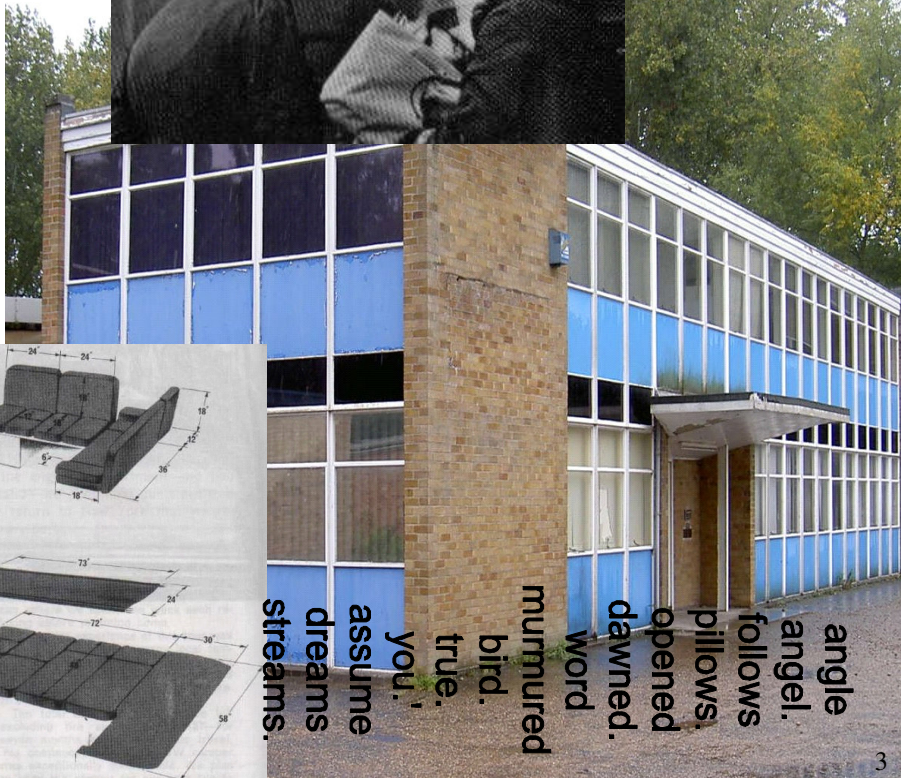
- Invader
- Tempo
- LD10
- Serena
- Citation
- 300ZX
- 23 Extreme GT
- XJS
- Mangusta
- Grantura
- Sagaris
- 65AGLX
- W25K Sports +1
- Javelin
- DS
- Zaz
- KR175
- Cutlass
- Facellia
- CV8
- Electra
- Pride
- Fuego
- Jumbuck
- 911
- 18/85
- 23-North America
- Sports Mark III
- Manta
- Atomota
- XK120
- 23-Sports Racer
- Samara
- Trident
- U400
- Plus 4
- Piazza
- 6000STE
- 1100 Sports
- 8000
- LeBaron
- Roadrunner
- Hawk VI
- Canberra
- SX250



- 19. What is a Tailgate Martin?
- 20. Who left as a free man, after Tim (37927)?
- 21. What is the number of a killer floating head Winchester?
- 22. In the movie Weird Science, how old was Lisa?
- 23. Where did Faiths last words led to the end of erotic drama?
- 24. How many did Laban beat in a sterling performance this year?
- 25. Who doesn't advertise sport on the radio?
- 26. In which decade was a massive project founded by Charles, Tom and Humphrey registered as a ltd?

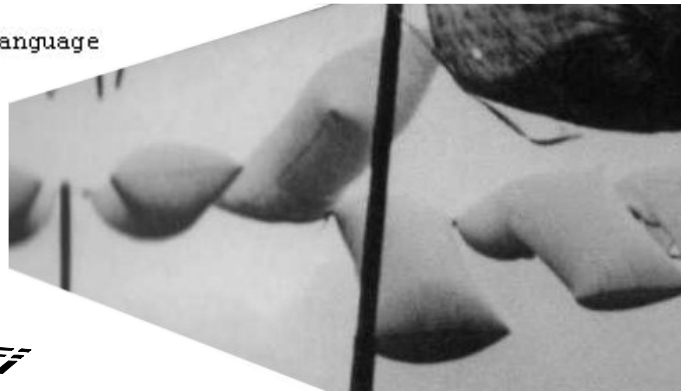
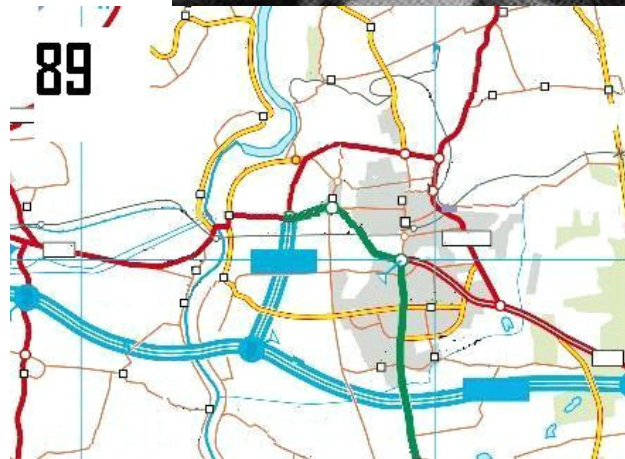


64 28 (-) 13 (28) 11 (13) 6 (11)  
 4 (6) 5 (4) 7 (5) 11 (7) 22 (11)



angle  
 angel.  
 follows  
 pillows.  
 opened  
 dawned.  
 word  
 murmured  
 bird.  
 true.  
 you.  
 assume  
 dreams  
 streams.

Life of John Milton  
 British Novelists and their Styles  
 Drammond of Hawthornden The Story of His Life &  
 Writings  
 Chatterton: A Story of the Year 1770  
 Edinburgh sketches and Memories  
 The Dark Ages  
 Romance  
 The Eighteenth Century  
 The Survey of English Usage  
 A Compréhensive Grammar of the English Language  
 thomas More  
 Man's unconquerable mind  
 The Genesis of Secrecy  
 Pieces of My Mind  
 The Sense of an Ending  
 Sense of an Ending  
 Shakespeare's language  
 Cockburn', Millennium  
 Doubles  
 Authors  
 The Rape of Tamar  
 Her Story  
 Heshel's Kingdom  
 The Price of Diamonds  
 The Trap and A Dance in the Sun  
 The God-fearer  
 The Confessions of Joseph Baisz  
 The Evidence of Love  
 Possession : A Romance  
 The Virgin in the Garden : A Novel  
 A Whistling Woman  
 Still Life  
 The Djinn in the Nightingale's Eye  
 Dark Horses  
 A Student's Grammar of the English Language  
 The Oxford English Grammar  
 The English Language Today  
 Rebecca's Vest  
 Inklings  
 The Uses of Error



VESSELS OF JUSTICE!!

27. What completes the set- Marlow, The River Thames, Marty-le-Roi?
28. Who died in BHR766 and was remembered with 12:36.2?
29. What is popular and trembles?
30. Who was on her way to glory when she was killed by a scarf?
31. Because of complaints by whom were the first adverts on a "minority" station in 1982 presented by corporate executives?







- 32. What is unusual about Wickham Market Station?
- 33. Where does the way of a Saxon and a Whiting coincide via the back of a greenbank?
- 34. A National trust property in which village could be visited by steaming west on King Henry's chain?
- 35. Over what monetary issue did Livingstone fight with Irvine in the South during the 1970's?
- 36. Where was the inventor of the stethoscope born?
- 37. Which forested area connects St Paul's Cathedral and the Barbican Centre?
- 38. Which river flows south after passing through the site of a 1598 battle?
- 39. Who defined the difference between a statesman and a politician?
- 40. Which LogicaCMG client built it's UK headquarters on the site of a former barracks?
- 41. Which Zoo was founded on the site of a monarchs game store?
- 42. An Italian glass mountain is built on Hovis along which road?
- 43. How many squares are in the National Grid?
- 44. Which sporting venue has been home to cricket, football, motor racing and athletics after being relocated from a park where someone was killed by an elephant?

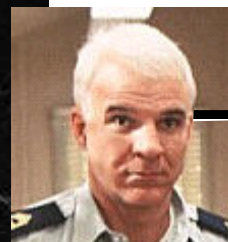


BAT SPECIFICATIONS						
BAT HEIGHT (cm)	87	85	82	80	78	76
BAT WIDTH (cm)	11	11	10.5	10	10	9.5
BAT SIZE	L/B	SH	Y	6	5	4
FOR AGES	15+	15+	12-14	10-11	8-9	7-8



**FNA994D1XTPP697EXIIDW5206XIIDOY6327361ERT811  
 2CY10361ERT11371GBJ14111NMD16111NMD19AEV646A  
 20BT6417LAC64E21LAC64E31JGF295D374ROD38VON62  
 0J39VON620J40TPP697EWNM741K41GPG4C49RNP22L52  
 RNP22L53J988554GEY624N56XPJ121G64BNU669L67RDH  
 472K80401981RCH951R109JEK11111WLC809X119WLC80  
 9X122BNU669L124HAW904D125WHJ232W128948TW130**

- 499 1752 1758
- 376 1717 1725
- 758 1779 1792
- 280 1704 1711
- 528 1810 1810
- 350 1642 1646
- 1200 1812 1832
- 100 1741 1746
- 452 1820 1825
- 500 1617 1660
- 180 1669 1671





CC BWAHTT JC ANSXLZ INPSGGUORE

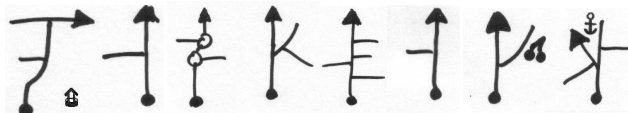
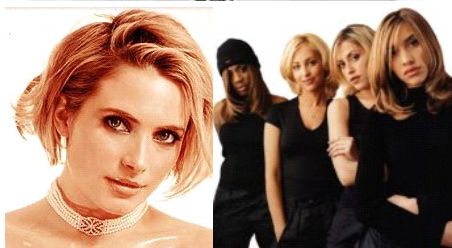
- 45. What fishing rig is also an elevator?
- 46. Where did Jayne from Cornwall go to retrieve her topcat?
- 47. Where would you go for treatment if you fell ill on March 3rd 2004?
- 48. At which meeting did Truman first let slip of a powerful new weapon?



5



- 49. Which project overran 10 years, lost 6 feet of depth, reduced clearances and after 44 years finally fulfilled its original design?
- 50. Where was Ho going when he changed his name to Van Ba?
- 51. Where did a continuity announcer, a carry on star and a goody all play games together?
- 52. The crest of which town features 3 leaves of the genus Fraxinus with faith?
- 53. Which TV programme featured, for no apparent reason, a green reptile, a yellow downhiller, a white bird, and The End?



There is no need to trespass.

Printed copies are available on request.  
 Many thanks to the following for their help with setting this years ATH:  
**Rana Banerjee, Clare Christy, Brian Shane, Mark Abbott, Brian Mills**  
 ©Stephen Lees 2003

7

***One doesn't need any great talent to churn out poetry that rhymes, but it is harder if there is always hidden depth to what's written and what is read by the public. To be somebody who is struggling and straining to find hidden meanings, to look inside and boldly go even further, to look beyond the obvious meaning, is what one aspires to. Quoting he who does accomplish this can reflect on what you do.***